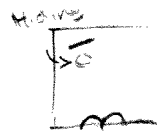


* should Paul enter from other side for variation, is it noticeable?

* Does Paul treat the chairs as an airplane? (In the opening)

French Scene Floor Plan

F.S. 10 how making in the courtyard.



(C), (A), (I)

F.S. 11 CLASS room



Everyone

Do people keep getting in the way as (C) tries to sit up front of the class

F.S. 12



Teacher, student (C), (I)

F.S. 13



The Colony (C), (J), (S)

↳ Julie keeps hugging (I)

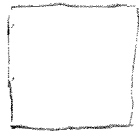
* Note to self:

watch moving

(C) from just one side of the stage to the other during her monologues: Boring.

* Explore using the floor to vary: up levels

F.S. 14

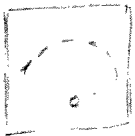


The Colony outside (A), (I), (C)

(A), (I)

(C)

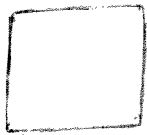
F.S. 15



Everyone classroom

→ set change (E) hands chairs to folks exiting?

F.S. 16



(C), (P)

Bedroom

x x

* what if All the chairs stayed on stage against the wall to make it easier to move them around

F.S. 17



Courtyard

(C), (S)

x x

* Freshow chair set. Too hooky? will look this evening.

F.S. 18



Ingrid's office

(I), (C)

French Scene Chair and Position Plot for Section II